

AIR COMPRESSOR ADDITION FOR SLED LAB BUILDING



SLED Forensics Lab Bldg
4700 Broad river Road
Columbia, South Carolina 29210

IMAGE OF MAP PROVIDED BY GOOGLEMAPS.COM

 **SITE LOCATION**
NO SCALE

INDEX OF DRAWINGS	
CI	COVER SHEET
PI	PLUMBING FLOOR PLAN
EI	ELECTRICAL FLOOR PLAN

CODE REVIEW INFORMATION

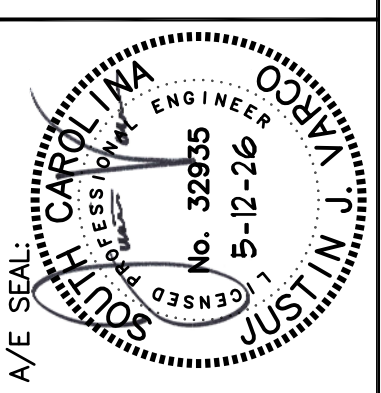
PROJECT DESIGNED IN ACCORDANCE WITH:

1. International Building Code - 2021 Edition.
2. International Plumbing Code - 2021 Edition.
3. International Mechanical Code - 2021 Edition.
4. National Electric Code - 2020 Edition.
5. Seismic Design Category C

SPECIAL NOTE:

IT IS HIGHLY RECOMMENDED THAT THE CONTRACTOR VISIT THE PROJECT SITE PRIOR TO SUBMITTING A BID AND THOROUGHLY FAMILIARIZE HIMSELF WITH ALL EXIST CONDITIONS RELATING TO THIS PROJECT. SUBMISSION OF A BID WILL BE CONSIDERED AS EVIDENCE THAT THE CONTRACTOR HAS VISITED THE SITE OF WORK.

ISSUE NO.	REMARKS:	FOR O&E REVIEW	BY	APPROVD	DATE:
-			DLF	DLF	05/22/26



MECHANICAL DESIGN, INC.
4403 Broad River Road
Columbia, S.C. 29210
(803) 731-9877 FAX
(803) 731-9877 FAX

CONTACT: D. Fulmer
COMM. NO. 264145

Project: **AIR COMPRESSOR FOR LAB BUILDING COLUMBIA, SC**

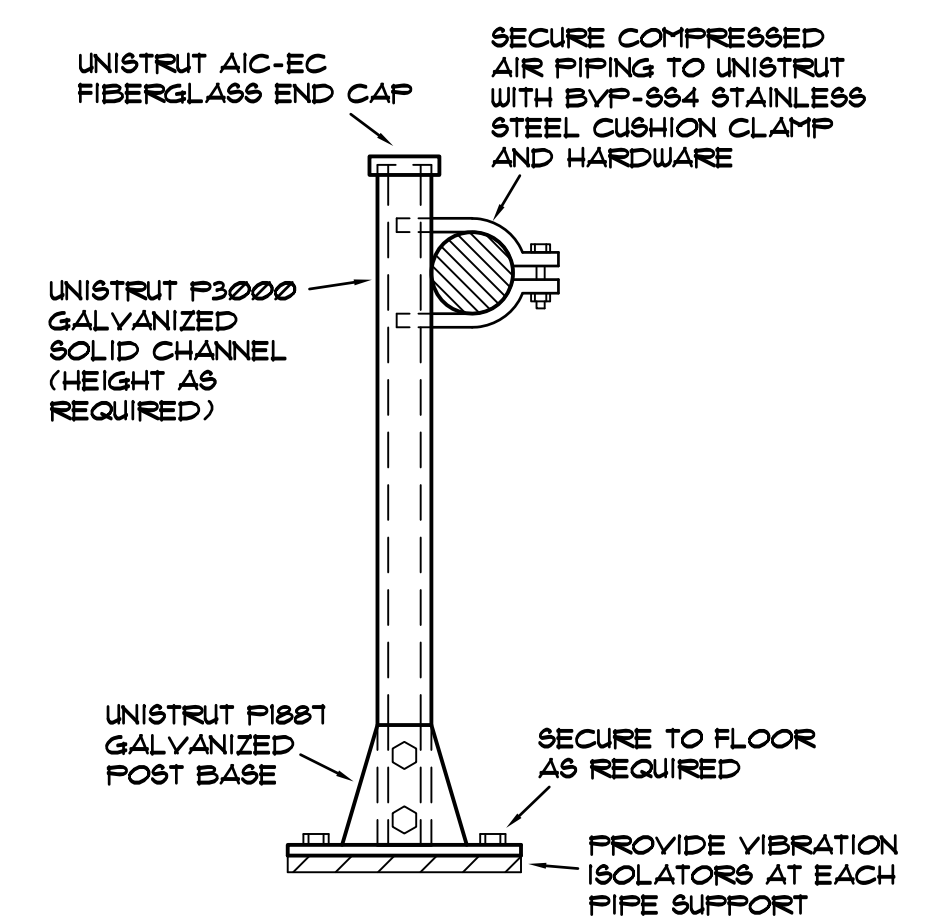
Sheet Title: **COVER SHEET**

SHEET NO. **01**

THIS DRAWING IS THE PROPERTY OF MECHANICAL DESIGN, INC. AND SUBJECT TO RETURN UPON REQUEST. IT IS NOT TO BE COPIED OR REPRODUCED, NOR IS IT TO BE USED FOR ANY PURPOSE OTHER THAN THAT FOR WHICH IT WAS FURNISHED, WITHOUT THE WRITTEN CONSENT OF MECHANICAL DESIGN, INC.

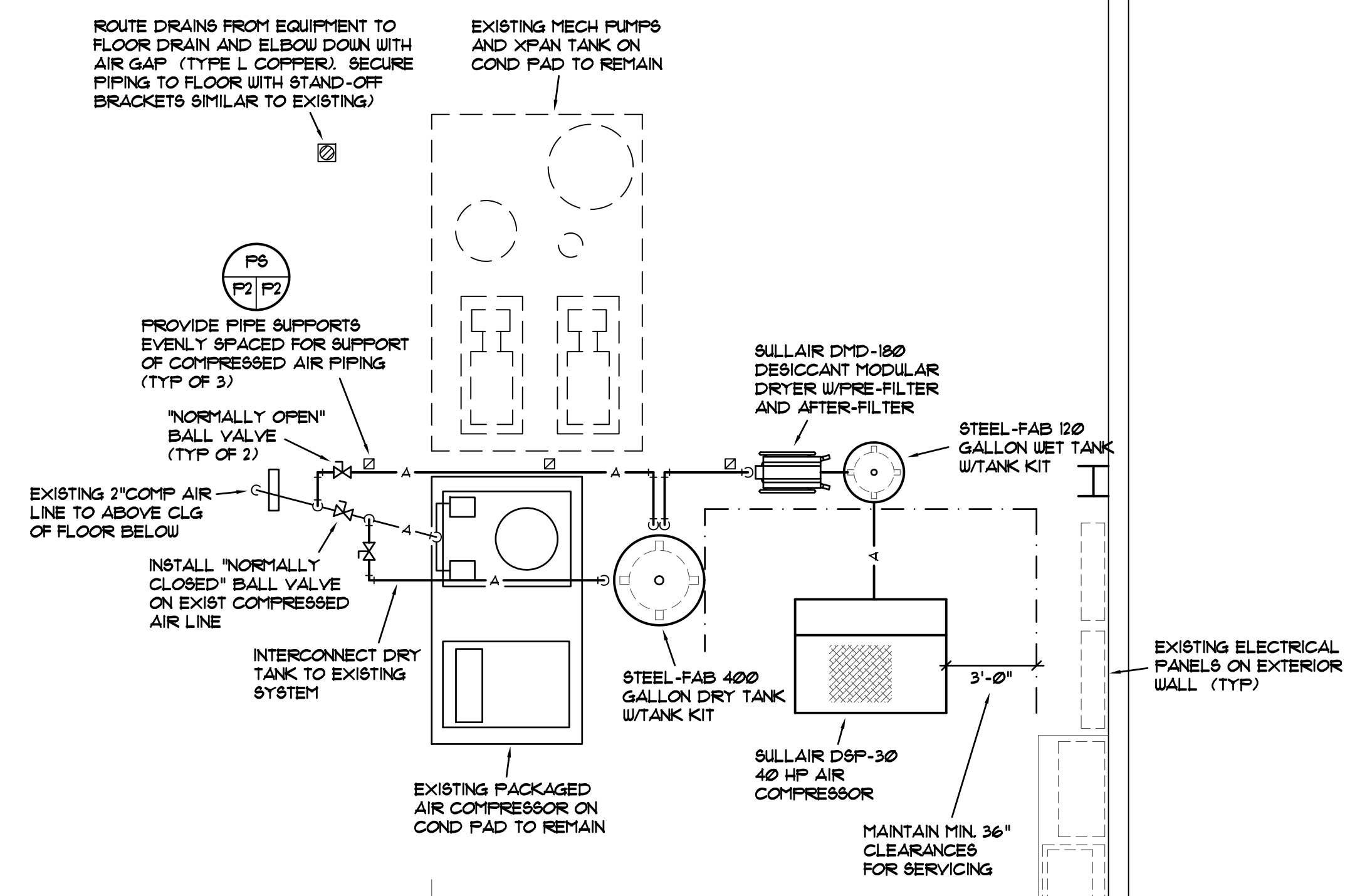
THIS DRAWING IS THE PROPERTY OF MECHANICAL DESIGN, INC. AND SUBJECT TO RETURN UPON REQUEST. IT IS NOT TO BE COPIED OR REPRODUCED, NOR IS IT TO BE USED FOR ANY PURPOSE OTHER THAN THAT FOR WHICH IT WAS FURNISHED, WITHOUT THE WRITTEN CONSENT OF MECHANICAL DESIGN, INC.

- ### PLUMBING NOTES
- DO NOT SCALE DRAWINGS. ROUGH FROM EXISTING CONDITIONS, ARCHITECTURAL AND EQUIPMENT MANUFACTURER'S DRAWINGS.
 - COORDINATE PLUMBING SYSTEMS WITH ALL TRADES TO AVOID INTERFERENCE AND CONFLICTS PRIOR TO INSTALLATION OF PIPING, FIXTURES, AND EQUIPMENT.
 - ALL WORK AND MATERIALS SHALL BE IN ACCORDANCE WITH THE (IBC) BUILDING AND (IPC) PLUMBING CODES, 2021 EDITIONS OF THE (ICC) INTERNATIONAL CODE COUNCIL AND ALL LOCAL CODES AND ORDINANCES.
 - WHENEVER THE WORD "PROVIDE" IS USED, IT SHALL MEAN FURNISH AND INSTALL COMPLETE AND READY FOR USE.
 - LOCATE VALVES TO PERMIT EASY ACCESS. CONTRACTOR SHALL OFFSET PIPING AS REQUIRED.
 - INSTALLATION OF EQUIPMENT AND PIPING SHALL COMPLY WITH THE (IBC) BUILDING CODE 2021 EDITION FOR SEISMIC PROTECTION. COORDINATE WITH SEISMIC EQUIPMENT SUPPLIER AS APPLICABLE.



PIPE SUPPORT DETAIL
NOT TO SCALE

NOTE:
PIPE SUPPORTS TO BE FURNISHED BY PLUMBING CONTRACTOR.
PIPE SUPPORTS SHALL BE SPACED MAXIMUM 6 FT. O.C.



NOTE:
ALL CONNECTIONS TO THE EXISTING CONCRETE SLAB SHALL BE MADE USING VIBRATION ISOLATORS.

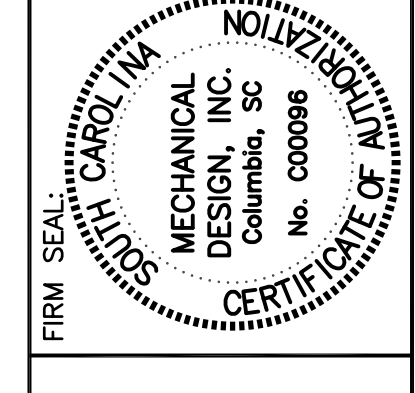
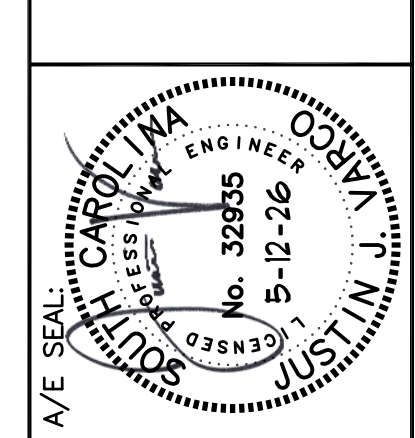
PLUMBING FLOOR PLAN - PENTHOUSE
SCALE: 1/4" = 1'-0"

PLUMBING SPECIFICATIONS

- 1.1 SCOPE:
- Provide all related equipment, labor, materials, excavation and backfill, operations and accessories required for the installation of complete and quietly operating plumbing systems, in accordance with the plans and specifications. This shall include the following:
 - Air Compressor System
 - Compressed Air Piping and Accessories
 - Vibration Isolation
 - Pipe Hangers and Supports
 - Tests
 - Guarantees
- 1.2 AIR COMPRESSOR SYSTEM:
- Compressor shall consist of a 40 HP, two stage oil-free unit, ISO Class Zero certified, Wye Delta starter in NEMA 1 electrical panel and 230/240V/60Hz TEFC premium efficiency motor. Power transmission shall be by pulleys and high efficiency V-rubber belts with auto belt tensioner, Oil Mist Remover, Motorized Isolation Valve, High Pre-cooler and microprocessors that control and protect the entire package. Maximum working pressure shall be 100/128 psi. Unit shall utilize AWF lubricant.
 - Compressor shall be furnished with factory 3-year, full replacement, non-prorated warranty with the use of genuine factory parts and standard factory maintenance schedule.
 - Unit shall be furnished with a full pneumatic operated inlet valve which incorporates the blow-off valve for simple Load / No Load operation.
 - First and Second Stage Aireds shall be stainless steel design (no carbon rotors). The rotors, internal stator housing and all internal passages shall be robotically coated with Hitachi PTFE-free HX-18 coating rated at 300°F. The aireds shall feature a bearing design not requiring a balance piston.
 - Unit microprocessor shall monitor all necessary functions while protecting machine from abnormalities and include Automatic or schedule Start/Stop, simple LCD monitor screen with Load/Lag capabilities, a shut down history menu, Instantaneous Power Interruption (IPI) Auto power restart, and optional MODBUS and BACnet protocols.
 - Compressor shall contain a stainless steel Pre-After cooler to protect and extend the life of the Aluminum After Cooler which maximizes thermal efficiency and improves the cooling system.
 - Compressor shall have the ability to recapture case oil mist to ensure oil-free compression and recycle gearcase oil to reduce top-offs.
 - Motorized isolation valve to automatically close compressed air discharge when compressor shuts off to protect the compressor components from condensate backflow from the system.
 - Reverse rotation delay to prevent damage to unit from reverse rotation.
 - Low Sound Enclosure with access panels for access to inlet air filtration and gearbox lubrication filter.
 - Compressor shall be furnished with a 115V/1Ph/60 hz, corrosion protected aluminum desiccant modular dryer with mini PLC monitor to provide complete automatic operation, NEMA 12 enclosure, power cables and optional Pre- and After-Filters.
 - Modular dryer shall be rated at 100 psi.
 - Compressor shall be furnished with ASME 120 gallon vertical wet tank (max 24" dia) and a ASME 400 gallon vertical dry tank (max 36" dia). Both tanks shall be steel fabricated with lifting lugs, multiple threaded inlets/outlets and painted or powder coated. Each tank shall be furnished with a tank kit to include a gauge, drain and PRV.
 - Compressor and all accessories shall be furnished with factory start-up.
 - Plumbing contractor shall set all components and secure to existing concrete floor with hardware as recommended by product manufacturer. Product manufacturer shall be available to instruct Contractor on installation requirements.
 - Air compressor and components shall be as manufactured by Sullair or accepted equal. Manufacturer's other than Sullair shall submit for 10-day Prior Approval. Submission shall include data sheets and specifications indicating compliance with all items listed above.
- 1.3 COMPRESSOR AIR PIPING:
- Compressed air piping shall be Series 9000 calibrated extruded aluminum piping with nickel plated solid brass push-connect fittings capable of 220 psi. Tee fittings shall be manufactured with internal holes to allow vertical installation.
 - Pipe system shall be a complete light-weight aluminum system designed for compressed air. Ball valves, fittings, hangers, clamps, etc. shall be by the same manufacturer.
 - Compressed air piping system shall be as manufactured Infinity as manufactured by Air System Technologies to match existing.
- 1.4 VIBRATION ISOLATION:
- Provide vibration isolation for all connections to existing concrete floor slab. Vibration isolation shall be as directed by a seismic equipment supplier.
- 1.5 TESTS:
- Test compressed air piping at 125% of working pressure. Using a soap solution, test all joints. Maintain test pressure for a minimum of 10 minutes. Once it is determined there are no leaks in the piping, reduce pressure to working pressure and observe air compressor for short cycling or blow-off.
- 1.6 GUARANTEE:
- Contractor shall guarantee all equipment, piping and any other materials specified under this Division of the contract for a period of one (1) year from the date of project acceptance unless otherwise indicated. Upon failure of any part(s) of the system during the guarantee period, the affected part(s) shall be repaired or replaced promptly by and at the expense of the Contractor.
 - If any component fails during the regular one year period, then the replacement part(s) shall be given an additional one (1) year guarantee from the time of replacement. This shall continue until the items have given one (1) year satisfactory service.
- 1.7 SUBMITTALS:
- Contractor shall submit detailed shop drawings, equipment materials cutsheets and product data clearly marked for all items listed below. All product data shall be submitted at one time in detail. Partial submission will not be accepted.
 - Air Compressor System
 - Compressed Air Piping and Accessories
 - Vibration Isolation
 - Pipe Hangers and Supports

END OF PLUMBING SPECIFICATIONS

DATE:	05/12/16
BY APPROVD	DLF
FOR OBE REVIEW	DLF
ISSUE NO.	1
REMARKS:	



MECHANICAL DESIGN, INC.
4403 Broad River Road
Columbia, S.C. 29910
(803) 731-9877 FAX
(803) 731-9877 FAX
CONTACT: D. Fulmer
COMM. NO. 264145

Project: AIR COMPRESSOR FOR LAB BUILDING COLUMBIA, SC
Sheet Title: PLUMBING FLOOR PLAN
SHEET NO. 10

THIS DRAWING IS THE PROPERTY OF MECHANICAL DESIGN, INC. AND SUBJECT TO RETURN UPON REQUEST. IT IS NOT TO BE COPIED OR REPRODUCED, NOR IS IT TO BE USED FOR ANY PURPOSE OTHER THAN THAT FOR WHICH IT WAS FURNISHED, WITHOUT THE WRITTEN CONSENT OF MECHANICAL DESIGN, INC.

ELECTRICAL SPECIFICATIONS

1. GENERAL PROVISIONS

A. Work included in these specifications and included on the drawings shall include furnishing all labor, materials, supplies, and equipment to perform all work required including cutting, channeling, chasing, excavating and backfilling, to install a complete and working electrical system(s) in accordance with these sections of the specifications and the accompanying drawings. This shall include all required preparation work, raceways, coordination, etc. required to install the electrical system.

B. The electrical work shall include, but in no way be limited to the following:

- 1. Raceways (To include raceways for conductors and cables, but also empty for designated signal systems and future uses.)
2. Electrical Distribution System.
3. Interior Power Systems.
4. Wiring Devices.
5. Connection and installation of Equipment Furnished Under Other Divisions of the Specification.

C. The contractor is responsible for including any and all work related to the electrical that is noted in any part of the specifications or any part of the drawings, including Divisions 1, 15 and any other sections. The contractor will supply power to equipment at the voltage indicated on the drawings. The contractor will be held responsible for coordinating the equipment voltages, control equipment, wiring, and locations and type of terminations/connections and/or disconnects required to comply with the National Electrical Code, International Building Code, International Energy Conservation Code, all local codes, and the equipment manufacturer's requirements.

D. Electrical Drawings are diagrammatic in nature except where specific dimensions, or specific details are shown on the electrical or mechanical drawings. The contractor shall refer to other drawings for exact locations of equipment, building dimensions, architectural details and conditions affecting the electrical work; however, field measurements take precedence over dimensioned drawings. The Electrical Contractor shall provide all labor and materials and all incidental elements; junction and pull boxes, filters, pull wires, connectors, support materials, fuses, disconnect switches, lamps, and labels, to install, connect, start-up and result in a complete and working system in accordance with the drawings and specifications. The contractor is responsible for coordinating the installation of all electrical work with the work of other contractors and/or trades. The electrical drawings are such that the electrical service to equipment furnished and installed under other sections of the contract documents (examples, include but are not limited to: HVAC equipment, water heaters, fans, pumps, motors, etc) is coordinated for the specified equipment only. If the equipment installed under other divisions of the contract documents is not the specified equipment it is the responsibility of the contractor to coordinate the electrical service/interface requirements with the electrical contractor.

E. Provide all wiring, connectors, fittings, connections, and all accessories for the complete installation of, and final connections to, equipment furnished under other divisions of the specifications and where indicated on the drawings or otherwise specified.

F. All safety disconnect switches shall be provided under Division 16 unless specifically noted on drawings. The electrical contractor shall furnish and install fuses that are sized in accordance to the equipment nameplate of the equipment served.

G. The contractor is responsible for obtaining all required permits and complying with all National (NEC, IBC, NFPA), State, County, and Municipal codes and regulations. This shall include, but not be limited to, the following:

- 1. Federal Occupational Safety and Health Act (OSHA)
2. NFPA 70 (National Electrical Code)
3. Americans with Disabilities Act (ADA).
4. International Building Code (IBC).

H. The contractor shall keep a set of construction drawings during the length of the project on which he shall note any and all changes from the original drawings. This record set of drawings shall be updated daily.

I. Electrical Subcontractor shall submit for review by the Engineer detailed shop drawings of all material listed below. All submittal data shall be submitted at one time through the Mechanical Engineer. No material or equipment for which Engineer's review is required shall be delivered to the job site or installed until the Electrical Contractor has in his possession the reviewed and approved shop drawings for the particular material and/or equipment. The Electrical Contractor shall assemble, organize, prepare and review for correctness shop drawings on all materials, equipment, fixtures and devices to be used. If material submitted is the result of "value engineering" or "prior approval" changes, the submittal must contain supporting documentation of the approved changes, otherwise it will be reviewed against the specified products on these plans. The Electrical contractor shall furnish the number of copies specified by the Mechanical Engineer or one (1) PDF copy of shop drawings if no number is specified by the Mechanical Engineer. Shop drawings that are incorrectly submitted, contain errors or omissions, or not in the form and sequence specified shall be rejected as unapproved.

Shop drawings shall contain as cover page a letter by the supplying Vendor stating that the Vendor has received full contract documents and that to the best of his or her knowledge the submittal is in compliance with the contract documents and design intent including all ancillary parts and pieces required for a complete job.

Review of shop drawings in no way relieves the Contractor of his responsibility of quantity, dimensions, weights, means and methods, safety, or coordination with others.

Failure of the Contractor to submit shop drawings to the Engineer with reasonable time for review shall not entitle the Contractor to an extension of contract time. Reasonable review time is fifteen working days unless otherwise specified.

At minimum shop drawings shall be submitted for

- 1. Power distribution equipment (breakers, disconnects, etc.)
2. Basic materials; wire, conduit, fittings, wiring devices
3. Fuses; include current limiting characteristics

J. Requests for Substitution

Not applicable.

K. Catalog numbers and names that appear in the specifications or on the plans may be incomplete or obsolete and are for descriptive purposes only. As such they may not indicate all of the parts, pieces and systems required for a complete and operating installation. It is the responsibility of the Electrical Contractor, the Vendor and the Supplier to review the plans, specifications and applications to determine the correct item(s) required to include all installation and support materials and systems for a complete and working installation.

2. FIRE SPREAD PREVENTION MATERIAL

A. The work shall include the requirement to install fire spread prevention material wherever the electrical contractor installs or penetrates a material (wall, etc.) to install electrical equipment or materials.

B. Fire Resistance Rating: Whenever a fire rated wall, floor, floor-ceiling or roof-ceiling assembly is shown with through-penetrations, provide materials and application procedures which have been tested and classified by UL and approved by FM for the assembly.

C. Installation shall be in accordance with the printed instructions as supplied by the manufacturer.

3. RACEWAYS/CONDUITS AND ASSOCIATED EQUIPMENT

A. The work shall include all raceways, conduits, fittings, and all other equipment required to install a raceway system. This shall include, but not limited to the following:

- 1. Rigid metal conduit and fittings.
2. Electrical metallic tubing and fittings.
3. Flexible metal conduit and fittings.
4. Liquid tight flexible metal conduit and fittings.
5. Non-metallic conduit and fittings.

B. Except where otherwise permitted on drawings route all conductors in conduit.

C. All signal systems shall have their wiring installed in conduit/raceways to above accessible ceiling and in inaccessible ceiling spaces. All cabling exposed above ceiling shall be plenum rated.

Conduit routing and device wiring for signal system components is not shown on the drawings. The contractor shall coordinate with the signal system manufacturer to determine the conduit (size and routing) and wiring requirements to circuit the equipment shown on the drawings.

D. Specified products and their areas of use shall be as described on drawings.

E. Fittings shall be steel compression type, concrete tight for all EMT raceways. For PVC raceways, use slip fittings with glue joints. For rigid galvanized steel and IMC, fittings shall be threaded galvanized iron, heavy steel, concrete tight.

F. Size conduit for conductor type installed; 1/2 inch minimum size.

G. For all empty raceways, furnish and install a nylon pull cord. The nylon pull cord shall be rated for a 200 pound force pull strength.

4. WIRE AND CABLE - 600 VOLTS AND LESS

A. Work shall include the furnishing and installing of all required wire and cable to complete the wiring and electrical system. This shall include, but not be limited to the following:

- 1. Building wire.
2. Wiring connections and terminations.

B. Feeders and Branch Circuits Larger Than 6 AWG: Copper, stranded conductor, 600 volt insulation, THHN. Feeders and Branch Circuits 6 AWG and Smaller: Copper conductor, 600 volt insulation, THHN. 6 and 8 AWG, stranded conductor; smaller than 8 AWG, solid conductor. MINIMUM SIZE SHALL BE #12 FOR ALL WIRING ABOVE 48 VOLTS. All conductors in damp or wet locations (including below grade) shall be listed for that use, THWN-2 or equivalent.

C. All cables shall be color coded. Color coding shall be as follows:

Table with 2 columns: 120/208 Volt Phase and 277/480 Volt Phase. Colors include Black, Red, Blue, White, Green, Brown, Orange, Yellow, Gray, Green.

D. Each wire or cable in a feeder at its terminal points, and in each pull-box, junction box, and panel gutter through which it passes shall be identified to show the circuit number of the breaker that it connects to. Each common wire, common circuit to common loop of a system, sound system, or any signal system conductor, shall be identified.

E. All installation shall be in accordance with the NEC. All splices shall be in junction boxes and shall be electrically and mechanically secure. Where a circuit home run is shown on the plans without any conductor or raceway identification, it shall be a minimum of 2 #12, 1 #12 Ground, 1/2" Conduit. Place an equal number of conductors for each phase of a circuit in same raceway or cable. Splice conductors in the raceway or cable. Neatly trim and loose wiring inside boxes, equipment, and panelboards. Perform continuity test on all power and equipment branch circuit conductors. Verify proper phasing connections.

5. ELECTRICAL DISTRIBUTION EQUIPMENT

A. Electrical distribution equipment shall be by the same manufacturer as the existing distribution equipment in the facility.

B. All disconnect (safety switches) shall be heavy duty type and fusible unless noted otherwise.

6. SECONDARY GROUNDING

A. Work included shall include power system grounding, communication system grounding, and electrical equipment and raceway grounding and bonding. Ground electrical work in accordance with NEC Article 250, local codes as specified herein, and as shown on the drawings.

B. Install equipment grounding conductors in raceway with feeder and branch circuit conductors. Flexible metal conduit shall have a ground wire installed with the power conductors. Where connections are made to motors or equipment with flexible metal conduit, grounding conductor shall be stranded copper conductor within the conduit, bonded to the equipment and to the rigid metal raceway system.

7. TESTING

A. GUARANTEE OF WORK, EQUIPMENT AND MATERIALS

1. The complete system shall be free of faults, short circuits, grounds and open circuits. Balance loads across phases to obtain minimum neutral current in feeders and branch circuits.
2. The Electrical Contractor shall perform inspections and test as herein specified. The Electrical Contractor shall provide all material, equipment, labor and supervision to perform such tests and inspections.

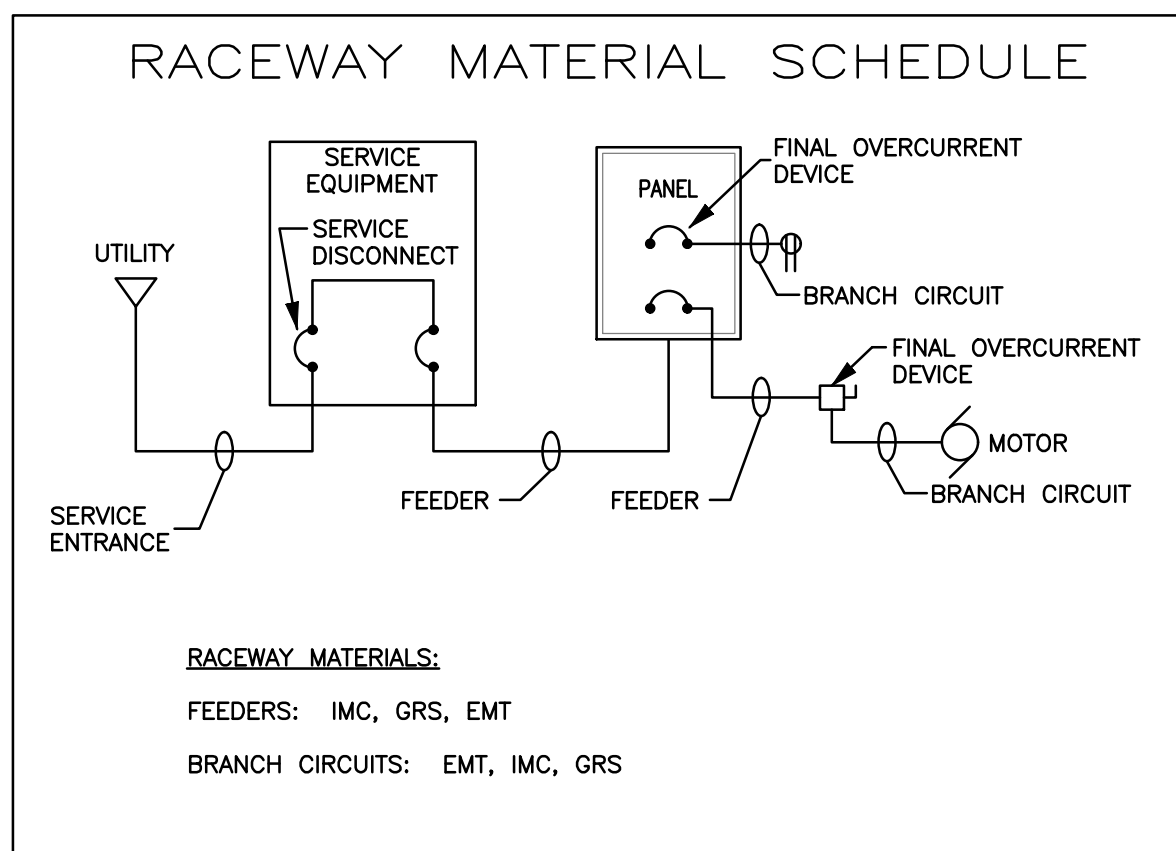
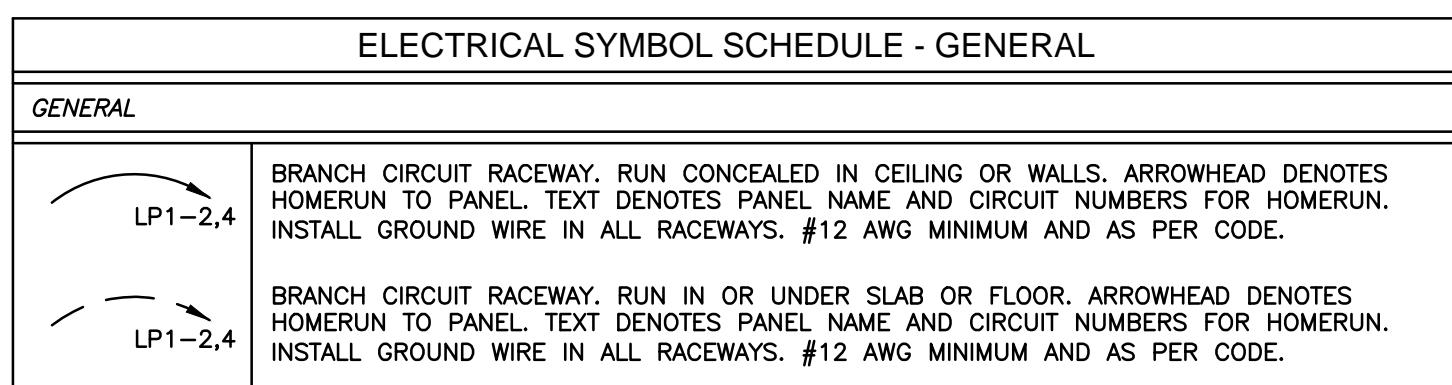
3. It is the intent of these tests to assure that all tested electrical equipment and systems are operational and within industry and the manufacturer's tolerances and is installed in accordance with the design Specifications. The test and inspections shall determine suitability for energization.

Written documentation of the tests and inspections shall be provided and shall include the company name performing the work, project name, date and time of tests, weather and humidity

B. Systems and equipment are to be tested and operated to verify compliance with the requirements of the contract documents and applicable codes.

Equipment, systems, conductors and devices to be tested are as follows:

- 1. Proper torque values on lugs and connectors.
2. Conductors - Conductors rated 100 amperes and above.
a. Proper conductor and insulation type
b. Insulation resistance test (Megger) at 1000 volts DC for 1 Minute or per cable manufacturer specifications.
c. Minimum insulation resistance values shall not be less than fifty (50) megohms.



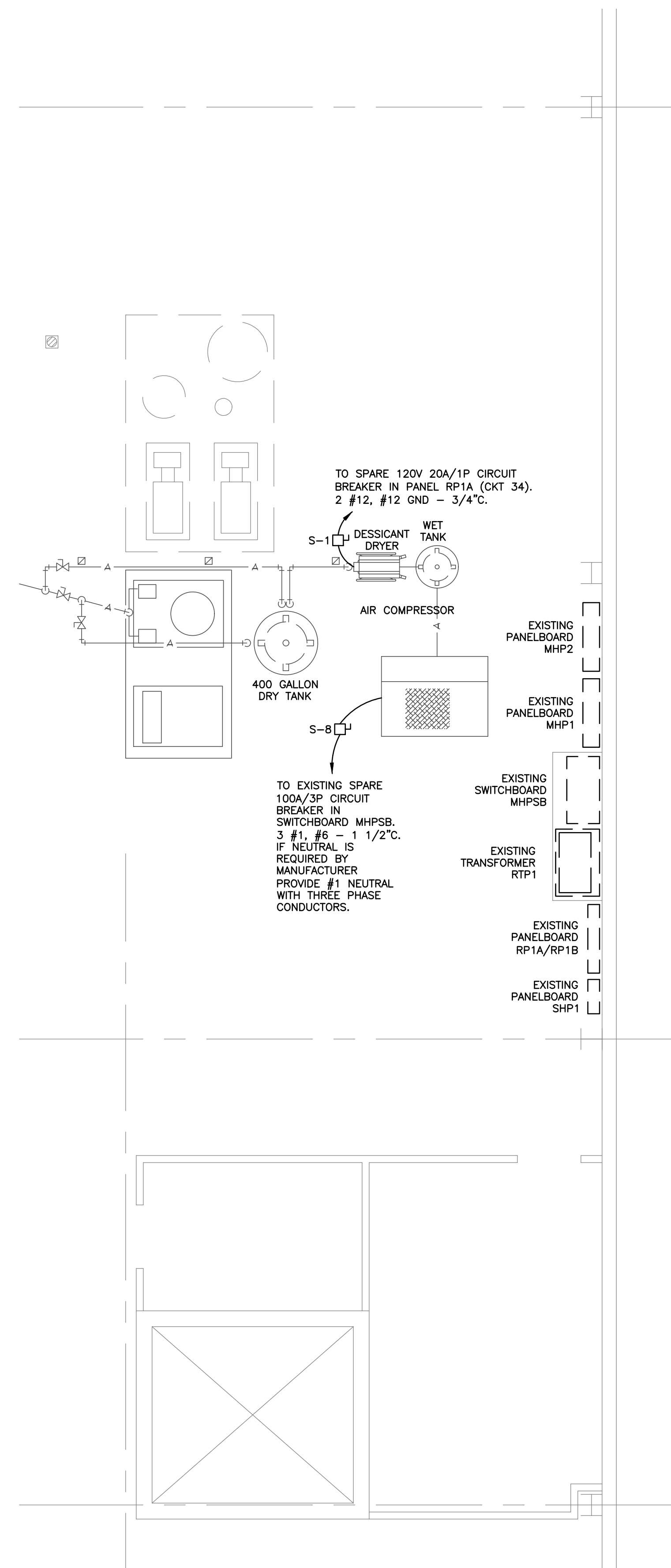
GENERAL NOTES ALL DRAWINGS:

- 1. DO NOT SCALE DRAWINGS. LOCATE OUTLETS, EQUIPMENT AND OTHER ELECTRICAL DEVICES AS INDICATED AND COORDINATE WITH OTHER TRADES TO AVOID CONFLICTS.
2. MINIMUM SIZE CONDUCTOR FOR POWER SHALL BE #12 AWG. PROVIDE DEDICATED NEUTRAL FOR EACH MULTI-WIRE BRANCH CIRCUIT IN COMPLIANCE WITH NEC.
3. ALL FUSES SHALL BE DUAL-ELEMENT TYPE, "FUSETRON" BY BUSSMAN, "ECON" BY ECONOMY, OR FERRAZ SHAWMUT.
4. BRANCH CIRCUIT SIZES ARE #12 AWG, 1/2"C. UNLESS OTHERWISE NOTED IN PANELBOARD SCHEDULES OR ON DRAWINGS.
5. ALL BRANCH CIRCUIT LOADS SHALL BE BALANCED ACROSS PANELBOARD BUSES TO OBTAIN MINIMUM NEUTRAL CURRENT.
6. ALL FLEXIBLE CONDUIT SHALL CONTAIN A GREEN WIRE BONDED TO RIGID RACEWAY, BOX OR FIXTURE AT EACH END OF FLEX. SIZE GROUND PER NEC TABLE 250-122. MAXIMUM LENGTH 6'.
7. PROVIDE PULL STRING IN ALL EMPTY RACEWAYS.
8. COORDINATE WITH OTHER TRADES TO PROVIDE WORK IN CORRECT LOCATIONS.
9. SEAL ALL PENETRATIONS THROUGH RATED WALLS AND CEILINGS WITH UL LISTED FIREPROOFING SYSTEM. THIS IS TO INCLUDE BUT IS IN NO WAY LIMITED TO CONDUCTOR, RACEWAY AND DEVICE PENETRATIONS. SUBMIT SYSTEM AND INSTALLATION DETAILS AS PART OF SHOP DRAWING SUBMITTAL.
10. WHERE NOT INDICATED OTHERWISE, EQUIPMENT GROUNDING CONDUCTORS SHALL BE SIZED PER NEC TABLE 250-122.
11. ALL METAL CONDUITS 1" AND LARGER SHALL HAVE A GROUNDING BUSHING BONDING CONDUIT TO ENCLOSURE.
12. AT SUBSTANTIAL COMPLETION CLEAN ALL LIGHT FIXTURES AND CLEAN ALL DEVICES AND EQUIPMENT IN THE CONSTRUCTION AREAS. REPLACE DAMAGED DEVICES AND DEVICE PLATES AS NEEDED.
13. VERIFY ALL MECHANICAL EQUIPMENT LOCATIONS AND ELECTRICAL REQUIREMENTS WITH MECHANICAL PLANS. IF MECHANICAL EQUIPMENT BEING PROVIDED DOES NOT MATCH DESIGN NOTIFY ENGINEER IMMEDIATELY.
14. ALL RACEWAYS TRANSITIONING BETWEEN CONDITIONED AND UNCONDITIONED SPACES AND RACEWAYS EXITING BUILDING SHALL BE SEALED IN ACCORDANCE WITH NEC. USE POLYWATER FST DUCT SEALANT SYSTEM OR EQUIVALENT.
15. ELECTRICAL WORK SHALL COMPLY WITH ALL NATIONAL, STATE AND LOCAL CODES, REQUIREMENTS AND ORDINANCES.
16. ALL BACKBOXES SHALL BE MINIMUM 4" SQUARE.
17. ALL EMT FITTINGS SHALL BE STEEL COMPRESSION TYPE WITH INSULATED THROAT.
18. PROVIDE PLASTIC ENGRAVED NAMETAGS FOR ALL ELECTRICAL GEAR, INCLUDING DISCONNECT SWITCHES. INDICATE EQUIPMENT NAME, EQUIPMENT SERVED (WHERE APPLICABLE), FEEDER SOURCE AND CIRCUIT, VOLTAGE. LETTERING SHALL BE 3/8" IN HEIGHT, WHITE ON BLACK BACKGROUND.
19. UPDATE ALL PANELBOARD AND SWITCHBOARD SCHEDULES.
20. SLEEVE ALL RACEWAY PENETRATIONS THROUGH SLABS, EXTERIOR WALLS/FOUNDATIONS AND SIMILAR. COORDINATE ALL PROPOSED PENETRATIONS WITH STRUCTURAL ENGINEER AND ARCHITECT.

DISCONNECT SWITCH SCHEDULE table with columns SWITCH and DESCRIPTION. Lists switches S-1 through S-15 with descriptions like 30A/2P, 60A/2P, 100A/2P, etc.

SWITCH NOTES:

- 1. ALL DISCONNECTS SHALL BE HEAVY DUTY TYPE AND BY SAME MFR AS PANELBOARDS.
2. 240V OR 600V TO SUIT CIRCUIT VOLTAGE.
3. ALL DISCONNECTS FUSIBLE UNLESS OTHERWISE NOTED, PROVIDE FUSES TO SUIT LOAD. ENCLLOSURES NEMA 3R OUTDOORS AND IN WET LOCATIONS, NEMA 1 ELSEWHERE UNLESS OTHERWISE NOTED.
4. ALL DISCONNECTS SERVING GROUND MOUNTED HVAC UNITS SHALL NOT BE MOUNTED HIGHER THAN 36" ABOVE FINISHED GRADE.
5. COORDINATE WITH EQUIPMENT MANUFACTURER AND INSTALL TO PROVIDE REQUIRED CLEARANCES PER NEC.
6. PROVIDE CURRENT LIMITING FUSES FOR AIR COMPRESSOR DISCONNECT TO LIMIT FAULT CURRENT TO 5,000A OR LESS BASED ON 42,000A AVAILABLE AT SWITCHBOARD MHPSB.
7. DISCONNECTS SHALL BE MOUNTED WITHIN SIGHT OF EQUIPMENT SERVED.
8. NF = NON-FUSED.



ELECTRICAL PLAN APPROX. SCALE: 1/4" = 1'-0"

Project: AIR COMPRESSOR FOR LAB BUILDING COLUMBIA, SC. Includes logos for ETI ENGINEERING, LLC and MECHANICAL DESIGN, INC., along with approval and issue stamps.